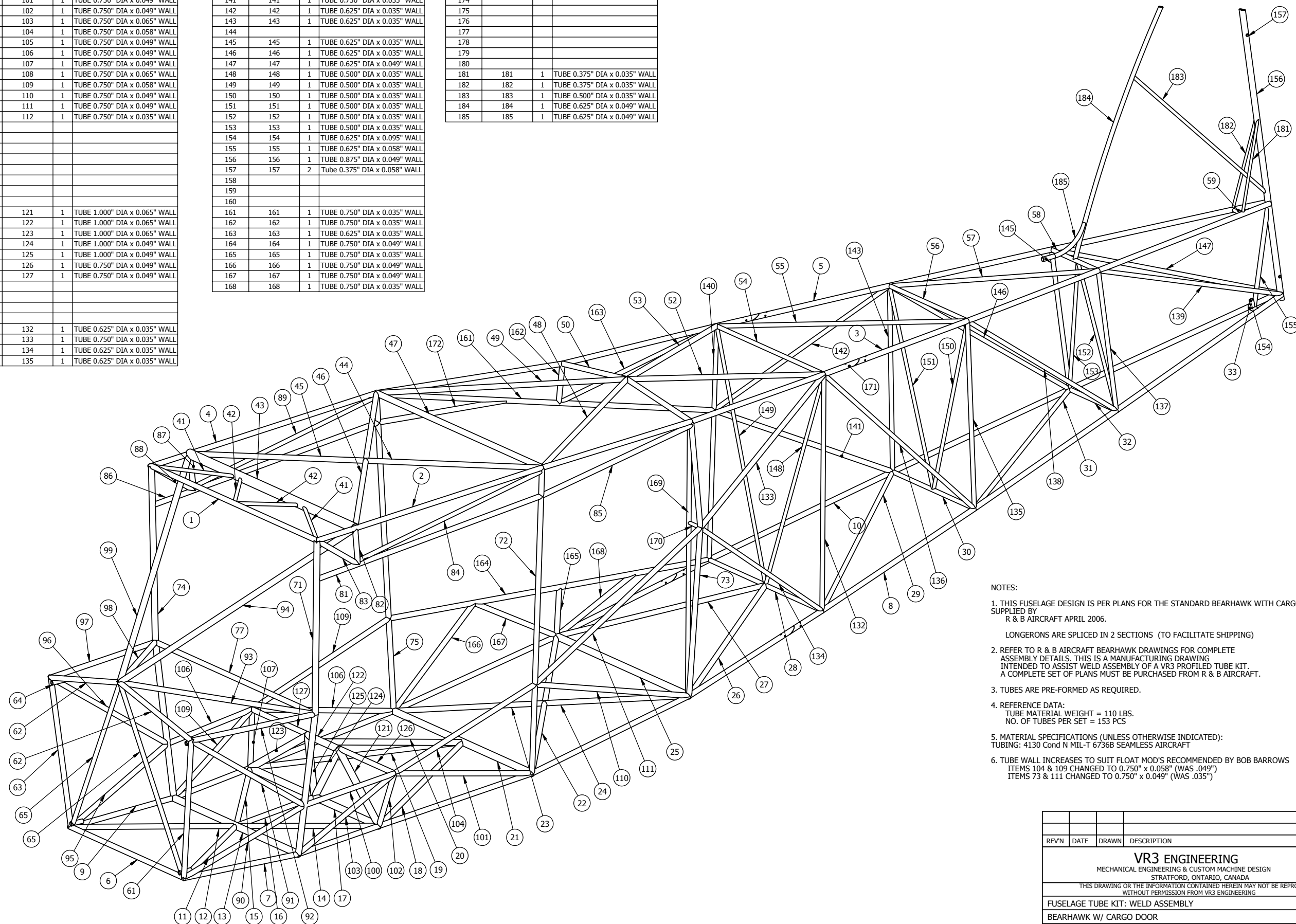


| ITEM NO. | PARTNUMBER | QTY. | Description                   |
|----------|------------|------|-------------------------------|
| 1        | 1          | 1    | TUBE 0.750" DIA x 0.035" WALL |
| 2        | 2          | 1    | TUBE 0.750" DIA x 0.035" WALL |
| 3        | 3          | 1    | TUBE 0.750" DIA x 0.035" WALL |
| 4        | 4          | 1    | TUBE 0.750" DIA x 0.035" WALL |
| 5        | 5          | 1    | TUBE 0.750" DIA x 0.035" WALL |
| 6        | 6          | 1    | TUBE 0.750" DIA x 0.049" WALL |
| 7        | 7          | 1    | TUBE 0.750" DIA x 0.049" WALL |
| 8        | 8          | 1    | TUBE 0.750" DIA x 0.049" WALL |
| 9        | 9          | 1    | TUBE 0.750" DIA x 0.049" WALL |
| 10       | 10         | 1    | TUBE 0.750" DIA x 0.049" WALL |
| 11       | 11         | 1    | TUBE 0.750" DIA x 0.035" WALL |
| 12       | 12         | 1    | TUBE 0.750" DIA x 0.035" WALL |
| 13       | 13         | 1    | TUBE 1.000" DIA x 0.058" WALL |
| 14       | 14         | 1    | TUBE 0.750" DIA x 0.049" WALL |
| 15       | 15         | 1    | TUBE 0.750" DIA x 0.049" WALL |
| 16       | 16         | 1    | TUBE 0.750" DIA x 0.049" WALL |
| 17       | 17         | 1    | TUBE 1.000" DIA x 0.065" WALL |
| 18       | 18         | 1    | TUBE 0.750" DIA x 0.049" WALL |
| 19       | 19         | 1    | TUBE 0.750" DIA x 0.049" WALL |
| 20       | 20         | 1    | TUBE 0.875" DIA x 0.049" WALL |
| 21       | 21         | 1    | TUBE 1.000" DIA x 0.049" WALL |
| 22       | 22         | 1    | TUBE 0.750" DIA x 0.049" WALL |
| 23       | 23         | 1    | TUBE 0.750" DIA x 0.049" WALL |
| 24       | 24         | 1    | TUBE 0.750" DIA x 0.049" WALL |
| 25       | 25         | 1    | TUBE 1.000" DIA x 0.049" WALL |
| 26       | 26         | 1    | TUBE 0.750" DIA x 0.035" WALL |
| 27       | 27         | 1    | TUBE 0.750" DIA x 0.035" WALL |
| 28       | 28         | 1    | TUBE 0.625" DIA x 0.035" WALL |
| 29       | 29         | 1    | TUBE 0.625" DIA x 0.035" WALL |
| 30       | 30         | 1    | TUBE 0.625" DIA x 0.035" WALL |
| 31       | 31         | 1    | TUBE 0.625" DIA x 0.035" WALL |
| 32       | 32         | 1    | TUBE 0.625" DIA x 0.035" WALL |
| 33       | 33         | 1    | TUBE 0.750" DIA x 0.049" WALL |
| 34       |            |      |                               |
| 35       |            |      |                               |
| 36       |            |      |                               |
| 37       |            |      |                               |
| 38       |            |      |                               |
| 39       |            |      |                               |
| 40       |            |      |                               |
| 41       | 41         | 2    | TUBE 0.500" DIA x 0.035" WALL |
| 42       | 42         | 2    | TUBE 0.500" DIA x 0.035" WALL |
| 43       | 43         | 1    | TUBE 1.375" DIA x 0.058" WALL |
| 44       | 44         | 1    | TUBE 0.750" DIA x 0.049" WALL |
| 45       | 45         | 1    | TUBE 0.750" DIA x 0.049" WALL |
| 46       | 46         | 1    | TUBE 0.750" DIA x 0.049" WALL |
| 47       | 47         | 1    | TUBE 0.875" DIA x 0.049" WALL |
| 48       | 48         | 1    | TUBE 0.750" DIA x 0.035" WALL |
| 49       | 49         | 1    | TUBE 0.750" DIA x 0.035" WALL |
| 50       | 50         | 1    | TUBE 0.750" DIA x 0.035" WALL |
| 51       |            |      |                               |
| 52       | 52         | 1    | TUBE 0.750" DIA x 0.035" WALL |
| 53       | 53         | 1    | TUBE 0.750" DIA x 0.035" WALL |
| 54       | 54         | 1    | TUBE 0.625" DIA x 0.035" WALL |
| 55       | 55         | 1    | TUBE 0.625" DIA x 0.035" WALL |
| 56       | 56         | 1    | TUBE 0.625" DIA x 0.035" WALL |
| 57       | 57         | 1    | TUBE 0.625" DIA x 0.035" WALL |
| 58       | 58         | 1    | TUBE 0.625" DIA x 0.035" WALL |
| 59       | 59         | 1    | TUBE 0.500" DIA x 0.049" WALL |
| 60       |            |      |                               |
| 61       | 61         | 1    | TUBE 0.750" DIA x 0.035" WALL |
| 62       | 62         | 2    | TUBE 0.750" DIA x 0.035" WALL |
| 63       | 63         | 1    | TUBE 0.750" DIA x 0.035" WALL |
| 64       | 64         | 4    | TUBE 0.625" DIA x 0.120" WALL |
| 65       | 65         | 2    | TUBE 0.625" DIA x 0.049" WALL |
| 66       |            |      |                               |
| 67       |            |      |                               |
| 68       |            |      |                               |
| 69       |            |      |                               |
| 70       |            |      |                               |
| 71       | 71         | 1    | TUBE 0.875" DIA x 0.049" WALL |
| 72       | 72         | 1    | TUBE 0.750" DIA x 0.035" WALL |
| 73       | 73         | 1    | TUBE 0.750" DIA x 0.049" WALL |
| 74       | 74         | 1    | TUBE 0.875" DIA x 0.049" WALL |
| 75       | 75         | 1    | TUBE 0.750" DIA x 0.035" WALL |
| 76       |            |      |                               |
| 77       | 77         | 1    | TUBE 0.750" DIA x 0.035" WALL |
| 78       |            |      |                               |
| 79       |            |      |                               |
| 80       |            |      |                               |
| 81       | 81         | 1    | TUBE 0.750" DIA x 0.035" WALL |
| 82       | 82         | 1    | TUBE 0.750" DIA x 0.049" WALL |
| 83       | 83         | 1    | TUBE 0.750" DIA x 0.049" WALL |
| 84       | 84         | 1    | TUBE 0.625" DIA x 0.049" WALL |
| 85       | 85         | 1    | TUBE 0.750" DIA x 0.035" WALL |
| 86       | 86         | 1    | TUBE 0.750" DIA x 0.035" WALL |
| 87       | 87         | 1    | TUBE 0.750" DIA x 0.049" WALL |
| 88       | 88         | 1    | TUBE 0.750" DIA x 0.049" WALL |
| 89       | 89         | 1    | TUBE 0.625" DIA x 0.049" WALL |
| 90       |            |      |                               |
| 91       | 91         | 1    | TUBE 0.750" DIA x 0.049" WALL |
| 92       | 92         | 1    | TUBE 0.750" DIA x 0.035" WALL |
| 93       | 93         | 1    | TUBE 0.750" DIA x 0.049" WALL |
| 94       | 94         | 1    | TUBE 0.750" DIA x 0.035" WALL |
| 95       | 95         | 1    | TUBE 0.875" DIA x 0.049" WALL |

| ITEM NO. | PARTNUMBER | QTY. | Description                   |
|----------|------------|------|-------------------------------|
| 96       | 96         | 1    | TUBE 0.750" DIA x 0.049" WALL |
| 97       | 97         | 1    | TUBE 0.750" DIA x 0.035" WALL |
| 98       | 98         | 1    | TUBE 0.750" DIA x 0.049" WALL |
| 99       | 99         | 1    | TUBE 0.750" DIA x 0.035" WALL |
| 100      | 100        | 1    | TUBE 0.875" DIA x 0.049" WALL |
| 101      | 101        | 1    | TUBE 0.750" DIA x 0.049" WALL |
| 102      | 102        | 1    | TUBE 0.750" DIA x 0.049" WALL |
| 103      | 103        | 1    | TUBE 0.750" DIA x 0.065" WALL |
| 104      | 104        | 1    | TUBE 0.750" DIA x 0.058" WALL |
| 105      | 105        | 1    | TUBE 0.750" DIA x 0.049" WALL |
| 106      | 106        | 1    | TUBE 0.750" DIA x 0.049" WALL |
| 107      | 107        | 1    | TUBE 0.750" DIA x 0.049" WALL |
| 108      | 108        | 1    | TUBE 0.750" DIA x 0.065" WALL |
| 109      | 109        | 1    | TUBE 0.750" DIA x 0.058" WALL |
| 110      | 110        | 1    | TUBE 0.750" DIA x 0.049" WALL |
| 111      | 111        | 1    | TUBE 0.750" DIA x 0.049" WALL |
| 112      | 112        | 1    | TUBE 0.750" DIA x 0.035" WALL |
| 113      |            |      |                               |
| 114      |            |      |                               |
| 115      |            |      |                               |
| 116      |            |      |                               |
| 117      |            |      |                               |
| 118      |            |      |                               |
| 119      |            |      |                               |
| 120      |            |      |                               |
| 121      | 121        | 1    | TUBE 1.000" DIA x 0.065" WALL |
| 122      | 122        | 1    | TUBE 1.000" DIA x 0.065" WALL |
| 123      | 123        | 1    | TUBE 1.000" DIA x 0.065" WALL |
| 124      | 124        | 1    | TUBE 1.000" DIA x 0.049" WALL |
| 125      | 125        | 1    | TUBE 1.000" DIA x 0.049" WALL |
| 126      | 126        | 1    | TUBE 0.750" DIA x 0.049" WALL |
| 127      | 127        | 1    | TUBE 0.750" DIA x 0.049" WALL |
| 128      |            |      |                               |
| 129      |            |      |                               |
| 130      |            |      |                               |
| 131      |            |      |                               |
| 132      | 132        | 1    | TUBE 0.625" DIA x 0.035" WALL |
| 133      | 133        | 1    | TUBE 0.750" DIA x 0.035" WALL |
| 134      | 134        | 1    | TUBE 0.625" DIA x 0.035" WALL |
| 135      | 135        | 1    | TUBE 0.625" DIA x 0.035" WALL |

| ITEM NO. | PARTNUMBER | QTY. | Description                   |
|----------|------------|------|-------------------------------|
| 136      | 136        | 1    | TUBE 0.625" DIA x 0.035" WALL |
| 137      | 137        | 1    | TUBE 0.625" DIA x 0.035" WALL |
| 138      | 138        | 1    | TUBE 0.625" DIA x 0.035" WALL |
| 139      | 139        | 1    | TUBE 0.625" DIA x 0.049" WALL |
| 140      | 140        | 1    | TUBE 0.625" DIA x 0.035" WALL |
| 141      | 141        | 1    | TUBE 0.750" DIA x 0.035" WALL |
| 142      | 142        | 1    | TUBE 0.625" DIA x 0.035" WALL |
| 143      | 143        | 1    | TUBE 0.625" DIA x 0.035" WALL |
| 144      |            |      |                               |
| 145      | 145        | 1    | TUBE 0.625" DIA x 0.035" WALL |
| 146      | 146        | 1    | TUBE 0.625" DIA x 0.035" WALL |
| 147      | 147        | 1    | TUBE 0.625" DIA x 0.049" WALL |
| 148      | 148        | 1    | TUBE 0.500" DIA x 0.035" WALL |
| 149      | 149        | 1    | TUBE 0.500" DIA x 0.035" WALL |
| 150      | 150        | 1    | TUBE 0.500" DIA x 0.035" WALL |
| 151      | 151        | 1    | TUBE 0.500" DIA x 0.035" WALL |
| 152      | 152        | 1    | TUBE 0.500" DIA x 0.035" WALL |
| 153      | 153        | 1    | TUBE 0.500" DIA x 0.035" WALL |
| 154      | 154        | 1    | TUBE 0.625" DIA x 0.095" WALL |
| 155      | 155        | 1    | TUBE 0.625" DIA x 0.058" WALL |
| 156      | 156        | 1    | TUBE 0.875" DIA x 0.049" WALL |
| 157      | 157        | 2    | TUBE 0.375" DIA x 0.058" WALL |
| 158      |            |      |                               |
| 159      |            |      |                               |
| 160      |            |      |                               |
| 161      | 161        | 1    | TUBE 0.750" DIA x 0.035" WALL |
| 162      | 162        | 1    | TUBE 0.750" DIA x 0.035" WALL |
| 163      | 163        | 1    | TUBE 0.625" DIA x 0.035" WALL |
| 164      | 164        | 1    | TUBE 0.750" DIA x 0.049" WALL |
| 165      | 165        | 1    | TUBE 0.750" DIA x 0.035" WALL |
| 166      | 166        | 1    | TUBE 0.750" DIA x 0.049" WALL |
| 167      | 167        | 1    | TUBE 0.750" DIA x 0.049" WALL |
| 168      | 168        | 1    | TUBE 0.750" DIA x 0.035" WALL |

| ITEM NO. | PARTNUMBER | QTY. | Description                   |
|----------|------------|------|-------------------------------|
| 169      | 169        | 1    | TUBE 0.625" DIA x 0.035" WALL |
| 170      | 170        | 1    | TUBE 0.500" DIA x 0.035" WALL |
| 171      | 171        | 4    | TUBE 0.625" DIA x 0.035" WALL |
| 172      | 172        | 1    | TUBE 0.750" DIA x 0.035" WALL |
| 173      |            |      |                               |
| 174      |            |      |                               |
| 175      |            |      |                               |
| 176      |            |      |                               |
| 177      |            |      |                               |
| 178      |            |      |                               |
| 179      |            |      |                               |
| 180      |            |      |                               |
| 181      | 181        | 1    | TUBE 0.375" DIA x 0.035" WALL |
| 182      | 182        | 1    | TUBE 0.375" DIA x 0.035" WALL |
| 183      | 183        | 1    | TUBE 0.500" DIA x 0.035" WALL |
| 184      | 184        | 1    | TUBE 0.625" DIA x 0.049" WALL |
| 185      | 185        | 1    | TUBE 0.625" DIA x 0.049" WALL |



- NOTES:
- THIS FUSELAGE DESIGN IS PER PLANS FOR THE STANDARD BEARHAWK WITH CARGO DOOR SUPPLIED BY R & B AIRCRAFT APRIL 2006.  
LONGERONS ARE SPliced IN 2 SECTIONS (TO FACILITATE SHIPPING)
  - REFER TO R & B AIRCRAFT BEARHAWK DRAWINGS FOR COMPLETE ASSEMBLY DETAILS. THIS IS A MANUFACTURING DRAWING INTENDED TO ASSIST WELD ASSEMBLY OF A VR3 PROFILED TUBE KIT. A COMPLETE SET OF PLANS MUST BE PURCHASED FROM R & B AIRCRAFT.
  - TUBES ARE PRE-FORMED AS REQUIRED.
  - REFERENCE DATA:  
TUBE MATERIAL WEIGHT = 110 LBS.  
NO. OF TUBES PER SET = 153 PCS
  - MATERIAL SPECIFICATIONS (UNLESS OTHERWISE INDICATED):  
TUBING: 4130 Cond N MIL-T 6736B SEAMLESS AIRCRAFT
  - TUBE WALL INCREASES TO SUIT FLOAT MOD'S RECOMMENDED BY BOB BARROWS  
ITEMS 104 & 109 CHANGED TO 0.750" x 0.058" (WAS .049")  
ITEMS 73 & 111 CHANGED TO 0.750" x 0.049" (WAS .035")

| REV#  | DATE           | DRAWN              | DESCRIPTION          |
|---|----------------|--------------------|----------------------|
|   |                |                    |                      |
| <b>VR3 ENGINEERING</b><br>MECHANICAL ENGINEERING & CUSTOM MACHINE DESIGN<br>STRATFORD, ONTARIO, CANADA                        |                |                    |                      |
| <small>THIS DRAWING OR THE INFORMATION CONTAINED HEREIN MAY NOT BE REPRODUCED WITHOUT PERMISSION FROM VR3 ENGINEERING</small> |                |                    |                      |
| FUSELAGE TUBE KIT: WELD ASSEMBLY<br>BEARHAWK W/ CARGO DOOR  |                |                    |                      |
| LINE3   |                |                    |                      |
| DRAWN: DVR  | DATE: FEB22-08 | PROJECT NO. 713-06 | DRAWING NO. 39051-01 |
| D'SCALE: 1:7  |                |                    | REV NO. 0            |