

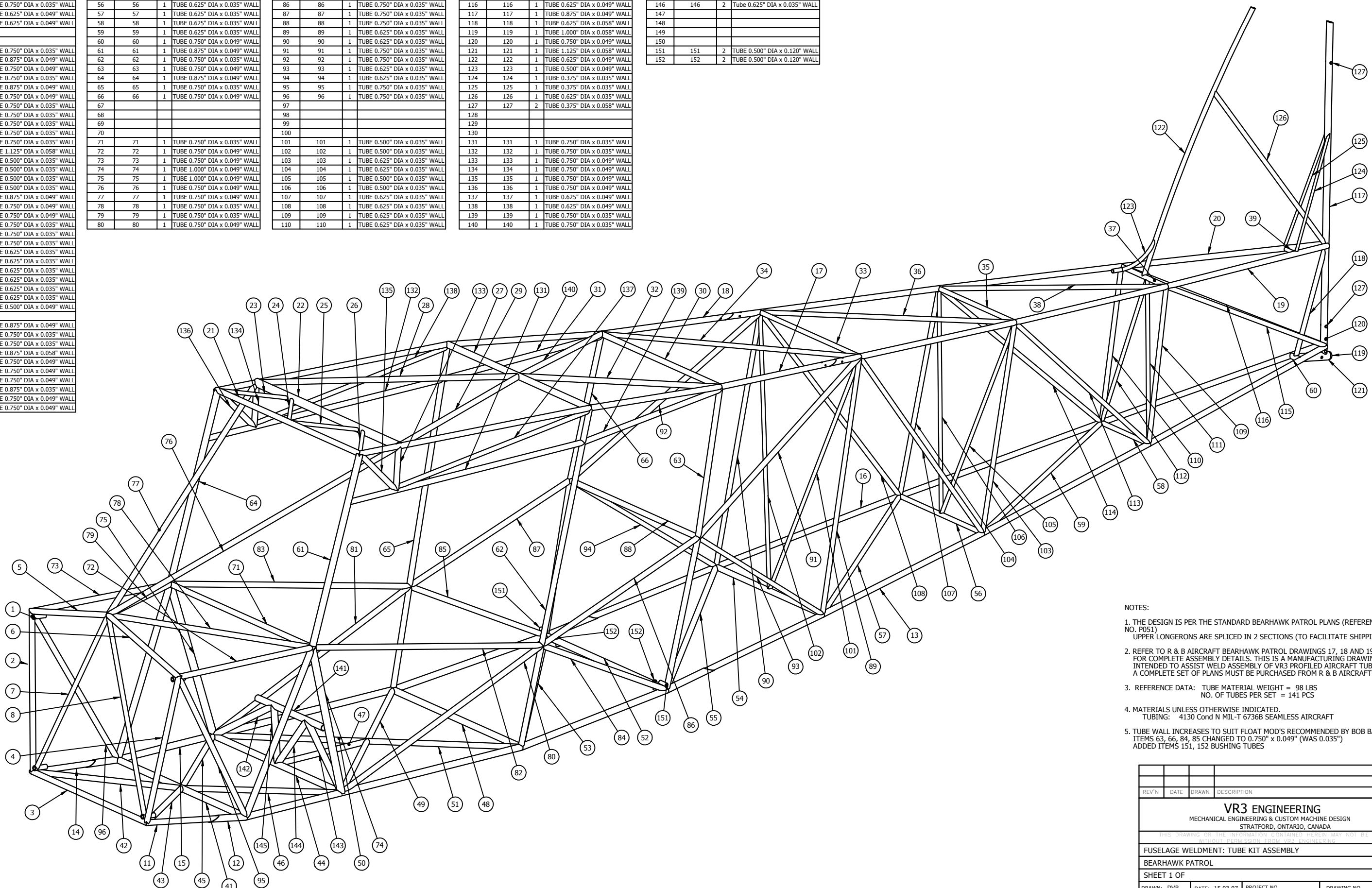
ITEM NO.	PART NUMBER	QTY.	Description
1	1	4	TUBE 0.625" DIA x 0.120" WALL
2	2	1	TUBE 0.750" DIA x 0.035" WALL
3	3	1	TUBE 0.750" DIA x 0.049" WALL
4	4	1	TUBE 0.750" DIA x 0.035" WALL
5	5	1	TUBE 0.750" DIA x 0.035" WALL
6	6	1	TUBE 0.750" DIA x 0.035" WALL
7	7	1	TUBE 0.625" DIA x 0.049" WALL
8	8	1	TUBE 0.625" DIA x 0.049" WALL
9			
10			
11	11	1	TUBE 0.750" DIA x 0.035" WALL
12	12	1	TUBE 0.875" DIA x 0.049" WALL
13	13	1	TUBE 0.750" DIA x 0.049" WALL
14	14	1	TUBE 0.750" DIA x 0.035" WALL
15	15	1	TUBE 0.875" DIA x 0.049" WALL
16	16	1	TUBE 0.750" DIA x 0.049" WALL
17	17	1	TUBE 0.750" DIA x 0.035" WALL
18	18	1	TUBE 0.750" DIA x 0.035" WALL
19	19	1	TUBE 0.750" DIA x 0.035" WALL
20	20	1	TUBE 0.750" DIA x 0.035" WALL
21	21	1	TUBE 0.750" DIA x 0.035" WALL
22	22	1	TUBE 1.125" DIA x 0.058" WALL
23	23	1	TUBE 0.500" DIA x 0.035" WALL
24	24	1	TUBE 0.500" DIA x 0.035" WALL
25	25	1	TUBE 0.500" DIA x 0.035" WALL
26	26	1	TUBE 0.500" DIA x 0.035" WALL
27	27	1	TUBE 0.875" DIA x 0.049" WALL
28	28	1	TUBE 0.750" DIA x 0.049" WALL
29	29	1	TUBE 0.750" DIA x 0.049" WALL
30	30	1	TUBE 0.750" DIA x 0.035" WALL
31	31	1	TUBE 0.750" DIA x 0.035" WALL
32	32	1	TUBE 0.750" DIA x 0.035" WALL
33	33	1	TUBE 0.625" DIA x 0.035" WALL
34	34	1	TUBE 0.625" DIA x 0.035" WALL
35	35	1	TUBE 0.625" DIA x 0.035" WALL
36	36	1	TUBE 0.625" DIA x 0.035" WALL
37	37	1	TUBE 0.625" DIA x 0.035" WALL
38	38	1	TUBE 0.625" DIA x 0.035" WALL
39	39	1	TUBE 0.500" DIA x 0.049" WALL
40			
41	41	1	TUBE 0.875" DIA x 0.049" WALL
42	42	1	TUBE 0.750" DIA x 0.035" WALL
43	43	1	TUBE 0.750" DIA x 0.035" WALL
44	44	1	TUBE 0.875" DIA x 0.058" WALL
45	45	1	TUBE 0.750" DIA x 0.049" WALL
46	46	1	TUBE 0.750" DIA x 0.049" WALL
47	47	1	TUBE 0.750" DIA x 0.049" WALL
48	48	1	TUBE 0.875" DIA x 0.035" WALL
49	49	1	TUBE 0.750" DIA x 0.049" WALL
50	50	1	TUBE 0.750" DIA x 0.049" WALL

ITEM NO.	PART NUMBER	QTY.	Description
51	51	1	TUBE 0.750" DIA x 0.049" WALL
52	52	1	TUBE 0.875" DIA x 0.049" WALL
53	53	1	TUBE 0.750" DIA x 0.035" WALL
54	54	1	TUBE 0.750" DIA x 0.035" WALL
55	55	1	TUBE 0.750" DIA x 0.035" WALL
56	56	1	TUBE 0.625" DIA x 0.035" WALL
57	57	1	TUBE 0.625" DIA x 0.035" WALL
58	58	1	TUBE 0.750" DIA x 0.035" WALL
59	59	1	TUBE 0.625" DIA x 0.035" WALL
60	60	1	TUBE 0.750" DIA x 0.049" WALL
61	61	1	TUBE 0.875" DIA x 0.049" WALL
62	62	1	TUBE 0.750" DIA x 0.035" WALL
63	63	1	TUBE 0.750" DIA x 0.049" WALL
64	64	1	TUBE 0.875" DIA x 0.049" WALL
65	65	1	TUBE 0.750" DIA x 0.035" WALL
66	66	1	TUBE 0.750" DIA x 0.049" WALL
67			
68			
69			
70			
71	71	1	TUBE 0.750" DIA x 0.035" WALL
72	72	1	TUBE 0.750" DIA x 0.049" WALL
73	73	1	TUBE 0.750" DIA x 0.049" WALL
74	74	1	TUBE 1.000" DIA x 0.049" WALL
75	75	1	TUBE 1.000" DIA x 0.049" WALL
76	76	1	TUBE 0.750" DIA x 0.049" WALL
77	77	1	TUBE 0.750" DIA x 0.049" WALL
78	78	1	TUBE 0.750" DIA x 0.035" WALL
79	79	1	TUBE 0.750" DIA x 0.035" WALL
80	80	1	TUBE 0.750" DIA x 0.049" WALL

ITEM NO.	PART NUMBER	QTY.	Description
81	81	1	TUBE 0.750" DIA x 0.049" WALL
82	82	1	TUBE 0.750" DIA x 0.035" WALL
83	83	1	TUBE 0.750" DIA x 0.035" WALL
84	84	1	TUBE 0.750" DIA x 0.049" WALL
85	85	1	TUBE 0.750" DIA x 0.049" WALL
86	86	1	TUBE 0.750" DIA x 0.035" WALL
87	87	1	TUBE 0.750" DIA x 0.035" WALL
88	88	1	TUBE 0.750" DIA x 0.035" WALL
89	89	1	TUBE 0.625" DIA x 0.035" WALL
90	90	1	TUBE 0.625" DIA x 0.035" WALL
91	91	1	TUBE 0.750" DIA x 0.035" WALL
92	92	1	TUBE 0.750" DIA x 0.035" WALL
93	93	1	TUBE 0.625" DIA x 0.035" WALL
94	94	1	TUBE 0.625" DIA x 0.035" WALL
95	95	1	TUBE 0.750" DIA x 0.035" WALL
96	96	1	TUBE 0.750" DIA x 0.035" WALL
97			
98			
99			
100			
101	101	1	TUBE 0.500" DIA x 0.035" WALL
102	102	1	TUBE 0.500" DIA x 0.035" WALL
103	103	1	TUBE 0.625" DIA x 0.035" WALL
104	104	1	TUBE 0.625" DIA x 0.035" WALL
105	105	1	TUBE 0.500" DIA x 0.035" WALL
106	106	1	TUBE 0.500" DIA x 0.035" WALL
107	107	1	TUBE 0.625" DIA x 0.035" WALL
108	108	1	TUBE 0.625" DIA x 0.035" WALL
109	109	1	TUBE 0.625" DIA x 0.035" WALL
110	110	1	TUBE 0.625" DIA x 0.035" WALL

ITEM NO.	PART NUMBER	QTY.	Description
111	111	1	TUBE 0.500" DIA x 0.035" WALL
112	112	1	TUBE 0.500" DIA x 0.035" WALL
113	113	1	TUBE 0.625" DIA x 0.035" WALL
114	114	1	TUBE 0.625" DIA x 0.035" WALL
115	115	1	TUBE 0.625" DIA x 0.049" WALL
116	116	1	TUBE 0.625" DIA x 0.049" WALL
117	117	1	TUBE 0.875" DIA x 0.049" WALL
118	118	1	TUBE 0.625" DIA x 0.058" WALL
119	119	1	TUBE 1.000" DIA x 0.058" WALL
120	120	1	TUBE 0.750" DIA x 0.049" WALL
121	121	1	TUBE 1.125" DIA x 0.058" WALL
122	122	1	TUBE 0.625" DIA x 0.049" WALL
123	123	1	TUBE 0.500" DIA x 0.049" WALL
124	124	1	TUBE 0.375" DIA x 0.035" WALL
125	125	1	TUBE 0.375" DIA x 0.035" WALL
126	126	1	TUBE 0.625" DIA x 0.035" WALL
127	127	2	TUBE 0.375" DIA x 0.058" WALL
128			
129			
130			
131	131	1	TUBE 0.750" DIA x 0.035" WALL
132	132	1	TUBE 0.750" DIA x 0.035" WALL
133	133	1	TUBE 0.750" DIA x 0.049" WALL
134	134	1	TUBE 0.750" DIA x 0.049" WALL
135	135	1	TUBE 0.750" DIA x 0.049" WALL
136	136	1	TUBE 0.750" DIA x 0.049" WALL
137	137	1	TUBE 0.625" DIA x 0.049" WALL
138	138	1	TUBE 0.625" DIA x 0.049" WALL
139	139	1	TUBE 0.750" DIA x 0.035" WALL
140	140	1	TUBE 0.750" DIA x 0.035" WALL

ITEM NO.	PART NUMBER	QTY.	Description
141	141	1	TUBE 0.875" DIA x 0.058" WALL
142	142	1	TUBE 0.875" DIA x 0.058" WALL
143	143	1	TUBE 0.875" DIA x 0.058" WALL
144	144	1	TUBE 0.875" DIA x 0.049" WALL
145	145	1	TUBE 0.875" DIA x 0.049" WALL
146	146	2	TUBE 0.625" DIA x 0.035" WALL
147			
148			
149			
150			
151	151	2	TUBE 0.500" DIA x 0.120" WALL
152	152	2	TUBE 0.500" DIA x 0.120" WALL



- NOTES:
1. THE DESIGN IS PER THE STANDARD BEARHAWK PATROL PLANS (REFERENCE SERIAL NO. P051)
UPPER LONGERONS ARE SPLICED IN 2 SECTIONS (TO FACILITATE SHIPPING)
 2. REFER TO R & B AIRCRAFT BEARHAWK PATROL DRAWINGS 17, 18 AND 19 FOR COMPLETE ASSEMBLY DETAILS. THIS IS A MANUFACTURING DRAWING INTENDED TO ASSIST WELD ASSEMBLY OF VR3 PROFILED AIRCRAFT TUBES. A COMPLETE SET OF PLANS MUST BE PURCHASED FROM R & B AIRCRAFT.
 3. REFERENCE DATA: TUBE MATERIAL WEIGHT = 98 LBS
NO. OF TUBES PER SET = 141 PCS
 4. MATERIALS UNLESS OTHERWISE INDICATED.
TUBING: 4130 Cond N MIL-T 6736B SEAMLESS AIRCRAFT
 5. TUBE WALL INCREASES TO SUIT FLOAT MOD'S RECOMMENDED BY BOB BARROWS
ITEMS 63, 66, 84, 85 CHANGED TO 0.750" x 0.049" (WAS 0.035")
ADDED ITEMS 151, 152 BUSHING TUBES

REV#	DATE	DRAWN	DESCRIPTION
VR3 ENGINEERING MECHANICAL ENGINEERING & CUSTOM MACHINE DESIGN STRATFORD, ONTARIO, CANADA			
<small>THIS DRAWING OR THE INFORMATION CONTAINED HEREIN MAY NOT BE REPRODUCED WITHOUT PERMISSION FROM VR3 ENGINEERING</small>			
FUSELAGE WELDMENT: TUBE KIT ASSEMBLY			
BEARHAWK PATROL			
SHEET 1 OF			
DRAWN: DVR	DATE: 15.03.07	PROJECT NO. 758-07	DRAWING NO. 39011-01
D'SCALE: 1:6			REV NO. X